

Enterprise by HansaWorld

SmartView by QlikView

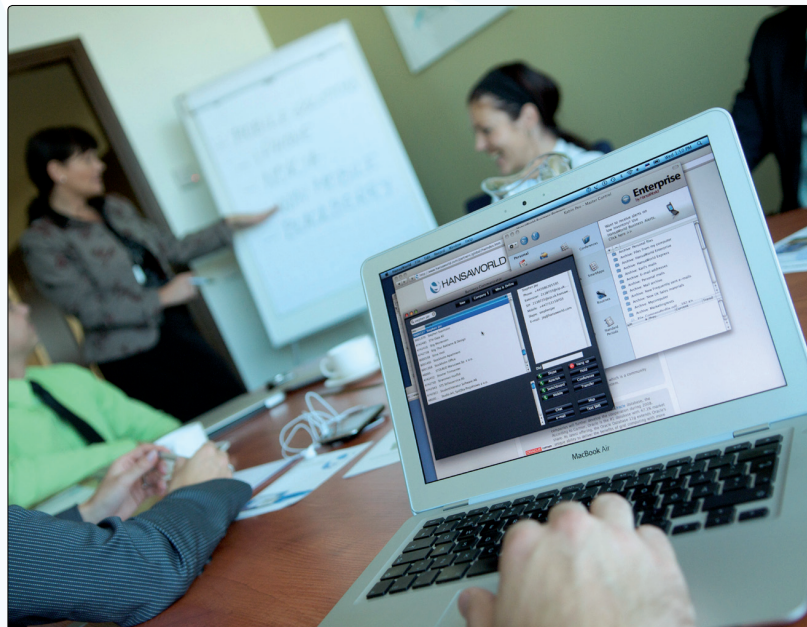


TABLE OF CONTENTS

Overview	3
Introductions And Terminology	4
Enterprise by HansaWorld.....	4
QlikView	4
Business Intelligence Platform (QlikView Server v.10.0).....	4
Business Intelligence Tools (QV Client, AJAX client, Java client).....	4
Enterprise by HansaWorld's integration with QlikView.....	4
Enterprise By HansaWorld.....	5
Installation and setup of the data loading mechanism from Enterprise by HansaWorld.....	5
Dynamic load from the Enterprise database using web calls.....	5
QlikView.....	7
Licensing Overview.....	7
OEM License.....	7
License types.....	7
Server vs. Client License.....	7
Installation and Configuration of QlikView Server.....	7
Prerequisites.....	7
Suported Operating Systems.....	8
Installation of the QlikView Server v.10.0.....	8
Installation of the QlikView Server.....	9
Configuration of the QlikView Server.....	12
Registering QlikView Server instance.....	13
Configuration of the Document Repository.....	13
Configuring QlikView Server Security and Access control.....	14
Setting up QlikView templates for web.....	14
Opening the SmartView template in the Enterprise's Inline browser.....	15
SmartView Sales Template By HansaWorld.....	16
Standard Sales template overview.....	16
Deployment of the Standard Sales template.....	16
Date Selection.....	16
Trends page	16
Top/Bottom page	17
What If.. page	17
Sales Ledger page	17
System Page.....	17
Modification of data loading script	17

Modification of the Sales template script.....17

Appendix19

Terminology between different versions of english language.....19



OVERVIEW

This document describes the QlikView Business Intelligence platform and the installation and deployment of the "SmartView Sales Template by HansaWorld powered by QlikView".

The document is for HansaWorld Internal use only and should not be distributed to customers.

INTRODUCTIONS AND TERMINOLOGY

Enterprise by HansaWorld

Enterprise by HansaWorld is an integrated accounting, CRM and ERP tool for working with Purchase and Sales Order Processing, Stock Control and the Sales, Purchase and Nominal Ledgers. Enterprise allows you to keep track of contact with Customers, organise mail shots and for planning activities of all kinds.

QlikView

Business Intelligence Platform (QlikView Server v.10.0)

QlikView is a Business Intelligence platform that allows you to design and build complex business reporting templates using different data sources and reporting techniques. QlikView provides data analysis across multiple departments, teams, and roles. It allows you to easily select and review data using a simple and intuitive interface.

Business Intelligence Tools (QV Client, AJAX client, Java client)

QlikView provides several access options to analyse the data.

The HansaWorld SmartView template is designed to work with the QlikView Standalone client for Windows, AJAX and JAVA client for web browser.

There are several restrictions and interface differences depending on the chosen end user client. The SmartView template is designed to minimise and eliminate these differences as much as possible.

Enterprise by HansaWorld's integration with QlikView

Enterprise by HansaWorld is integrated with QlikView using the "SmartView BI template by HansaWorld powered by QlikView".

The SmartView Sales template is designed to work with a standard Enterprise installation where the data extraction customisation has been installed.

ENTERPRISE BY HANSAWORLD

Installation and setup of the data loading mechanism from Enterprise by HansaWorld

The SmartView Sales template is set up to load data into QlikView using dynamic calls for data directly from Enterprise database. Alternatively QlikView can be set up to load the data from flat XML files exported from Enterprise by HansaWorld system.

This is based on Enterprise by HansaWorld v6.3

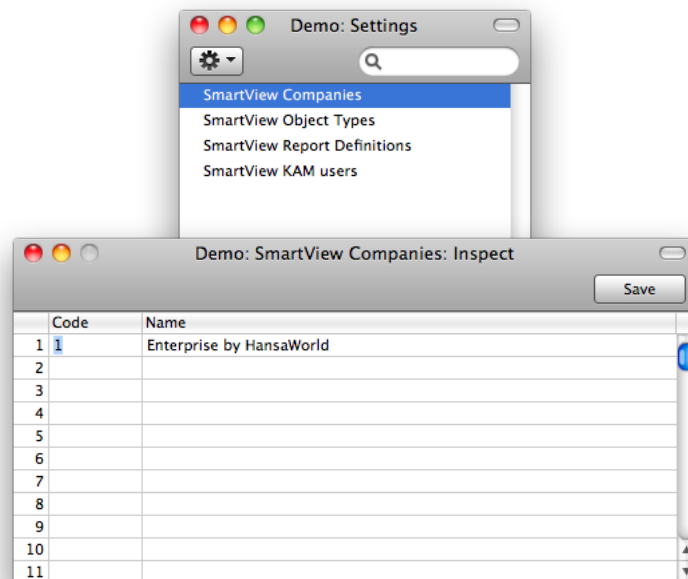
Dynamic load from the Enterprise database using web calls

To use the dynamic data loading mechanism a company needs to be set up to make the data available in SmartView template.

It is possible to set up one or several companies to be available for data analysis in QlikView.

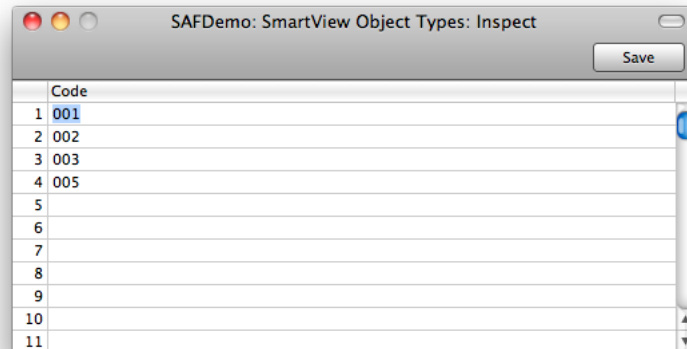
To setup the companies proceed to **Module>>Integration>>Settings>>SmartView Companies**

Specify the company number and company name as it is set up in **Companies** register in the **Systems** module.



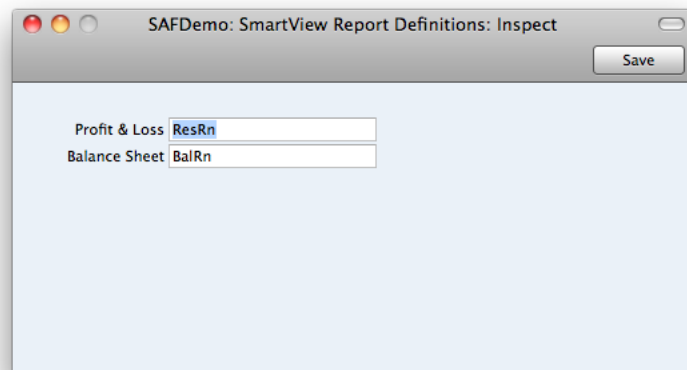
If the SmartView finance template is used there are two more setting to be configured:

Module>>Integration>>Settings>>SmartView object types



Specify here the object types to be made available when analysing financial data using the Smartview finance template.

Module>>Integration>>Settings>>SmartView report definitions



Paste special to select the NL reports to be used for Profit & Loss and Balance sheet.

Once the **SmartView Companies** setting is filled and saved, the QlikView script will be able to access and load data from Enterprise using direct web calls.

Please note that the SmartView HAL customisation is required to support web calls.

QLIKVIEW

Licensing Overview

OEM License

The Current OEM Licensing agreement between HansaWorld and QlikView allows for the use of Enterprise by HansaWorld as a data source for Business Intelligence templates.

License types

In QlikView Server installations a Server access license will be installed on the server that allows end users to use the license from the server. It does not require installation of a licence on client workstation.

When the customer chooses to use a Developer license with enhanced functionality to modify the SmartView templates, then a separate license file is issued and needs to be deployed on the local client installation.

Server vs. Client License

There are two types of licenses: Server CAL and QlikView Developer license.

- The Server CAL (Client Access License) is deployed on the QlikView server and allows any user to connect to the server to access the templates either using Web browser or the QlikView Windows Client.
- The QlikView Developer license allows the customer to open and modify the SmartView template using the local QlikView Windows Client and also to create new templates. The license must be deployed on local installation and once installed will not use the User Cal from the server.

Installation and Configuration of QlikView Server

Prerequisites

- In order to successfully install and run the QlikView Server/Publisher, the following basic requirements must be met by the system:
- 1 GHz (x86 processor) or 1.4 GHz (x64 processor). 2 GHz or faster, with several cores/processors recommended.
- QlikView Server will use the colour settings of the Windows server where it runs when sending charts and other graphics to the client. For best results, the colour palette on the Windows server should be set to at least 65,536 colours (16 bit).
- a mouse or an equivalent pointing device supported by Microsoft Windows.
- (optional) a DVD drive for DVD-based install media only.
- a hard disk with at least 450 MB of free disk space.
- 1 GB RAM minimum on x86 systems and 4GB minimum on X64 systems. The server's capacity to publish QlikView documents and the number of users who concurrently can connect to it are strongly related to the amount of RAM available.
- An http server for providing QlikView Java, Java Objects Client and AJAX ZFC solutions to end users (e.g. MS Internet Information Services (IIS) or the built-in QlikView WebServer). Microsoft IIS or the built-in web server is required when using tunnelling, external authentication or NT security with Java clients and whenever the AJAX Zero-Footprint client is used.
- TCP/IP Network.
- Microsoft .NET 3.5. SP1
- Actual requirements will vary, based on system configurations. It is recommended that you work with your local QlikView representative to configure an appropriate hardware platform for your QlikView

Server/Publisher requirements.

- **Microsoft Internet Explorer 7, Firefox 3 or Google Chrome to use QlikView Management Console.**

Supported Operating Systems

- QlikView Server is supported on following Operating Systems:
- Microsoft® Windows Server 2003™ including x64 Edition
- Microsoft® Windows Server 2008™ including x64 Edition
- Microsoft® Windows XP™ including x64 Edition*
- Microsoft® Windows Vista™ including x64 Edition*
- Microsoft® Windows 7 including x64 Edition*

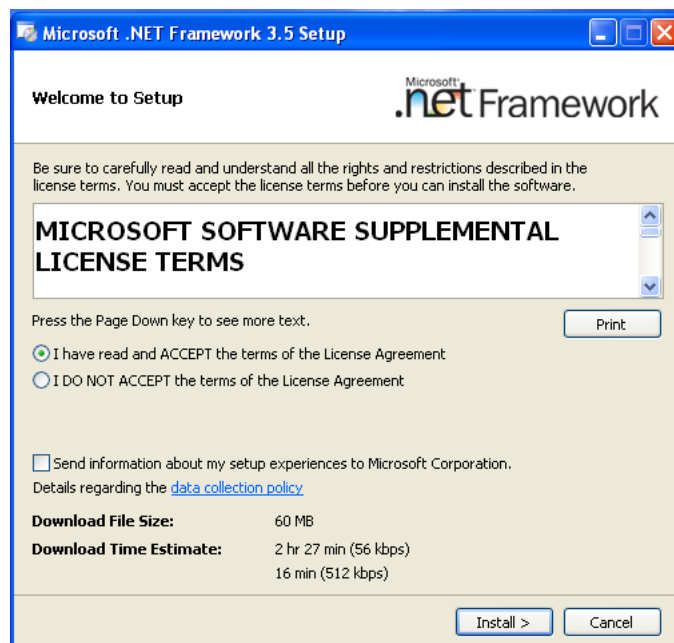
*Recommended for development and testing purposes only.

Installation of the QlikView Server v.10.0

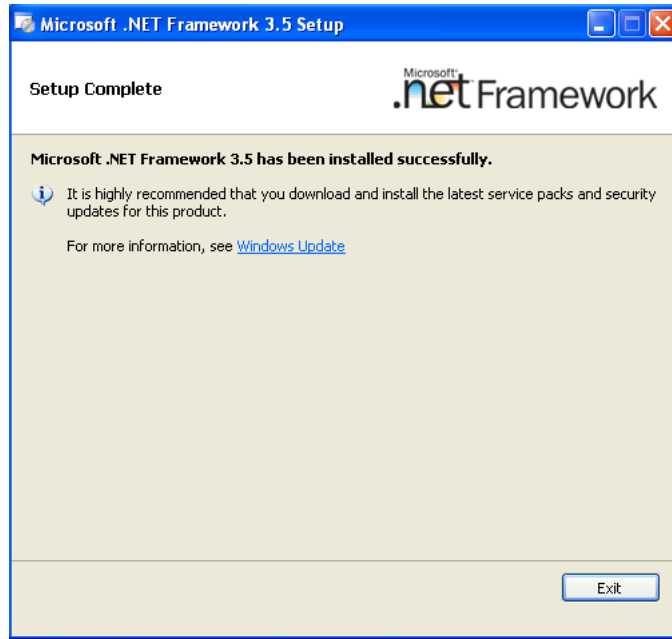
The installation package can be downloaded from <http://www.qlikview.com>. You must be registered as a QlikCommunity member to access the Downloads section of the page. You have to register using your HansaWorld email address.

To start the installation double click the **QvsRedist.exe** file from your installation media.

If the .Net Framework version 3.5 is not installed on the Server machine, then installation wizard will automatically start the installation of the .Net 3.5 Framework.



Click the radio button "I have read and ACCEPT the terms of the License Agreement" and click "Install".



After .Net Framework 3.5 is successfully installed click the "Exit" button and restart the operating system to continue with the installation.

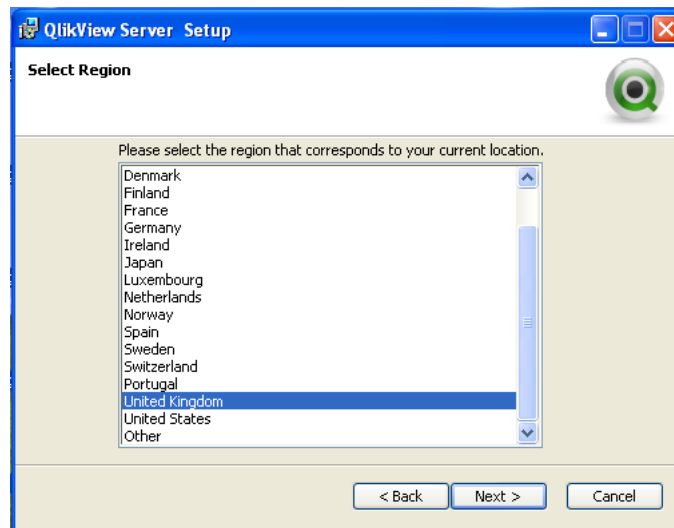
Installation of the QlikView Server

To start the QlikView Server installation run the **QvsRedist.exe** file from the installation media.

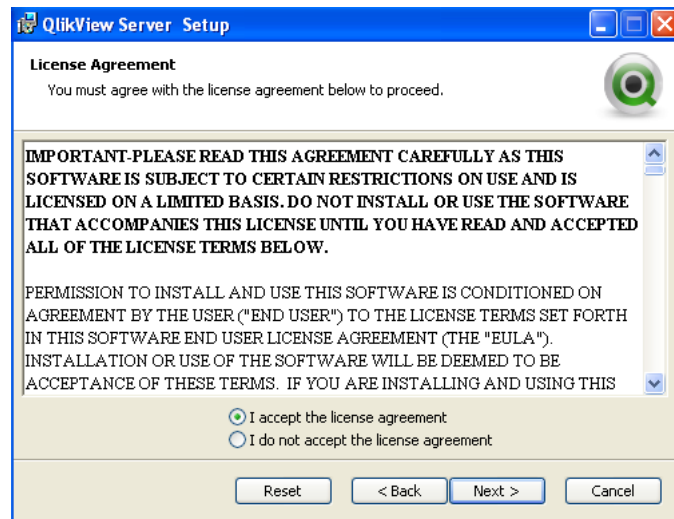
Click **Next** to continue with the QlikView Server setup



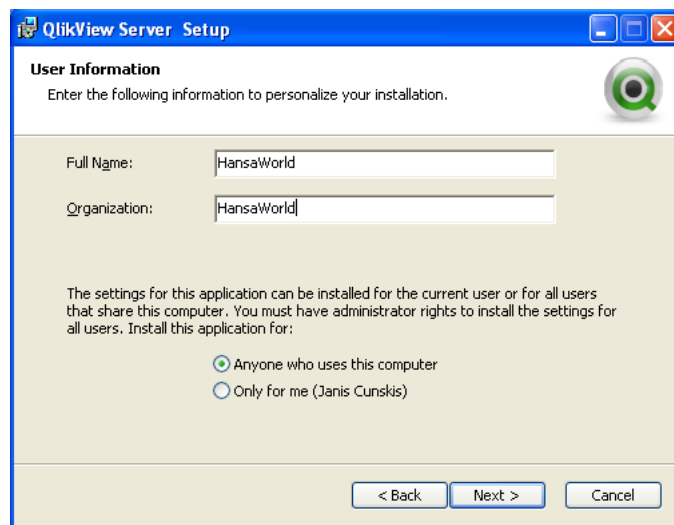
Select the region for the local location of the server



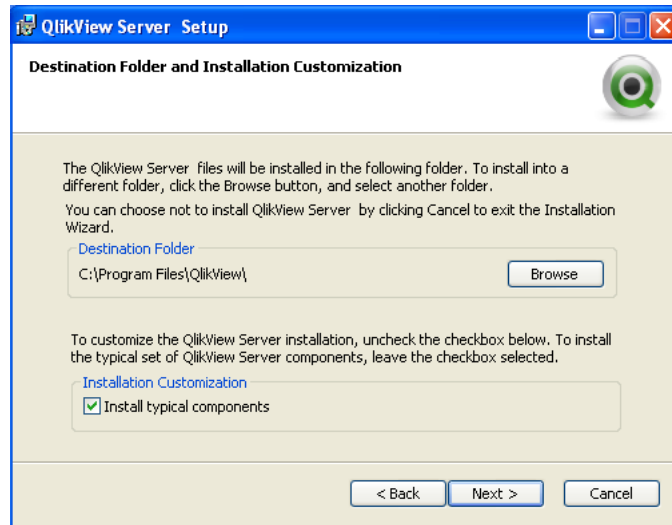
Read the license agreement, and continue by selecting I accept the license agreement, and then click Next.



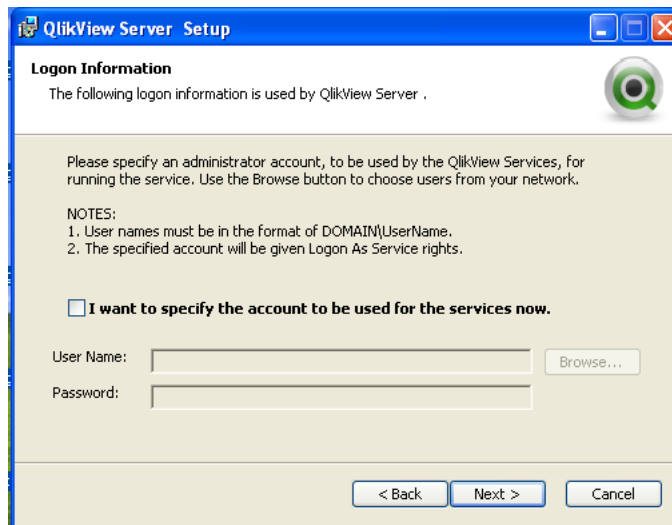
Enter the user information for QlikView Server.



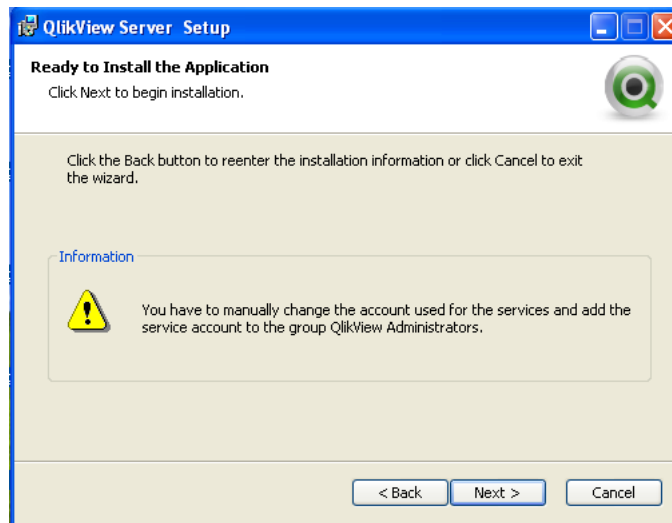
All files will be installed within the specified folder location. If you would like to change the root folder location of the installed files, click Browse to specify the preferred location. For full functionality, including the SDK and documents, you must unmark the Install Typical Components checkbox and choose to install the SDK. Continue by clicking Next.



Enter the user credentials for the administrator level account that will be used to run the services required for the QlikView Server. If you leave User Name and Password fields blank QlikView will be installed under the local system account.



Click **Next** to install the application.



Once the Installation is complete, click **Finish**.



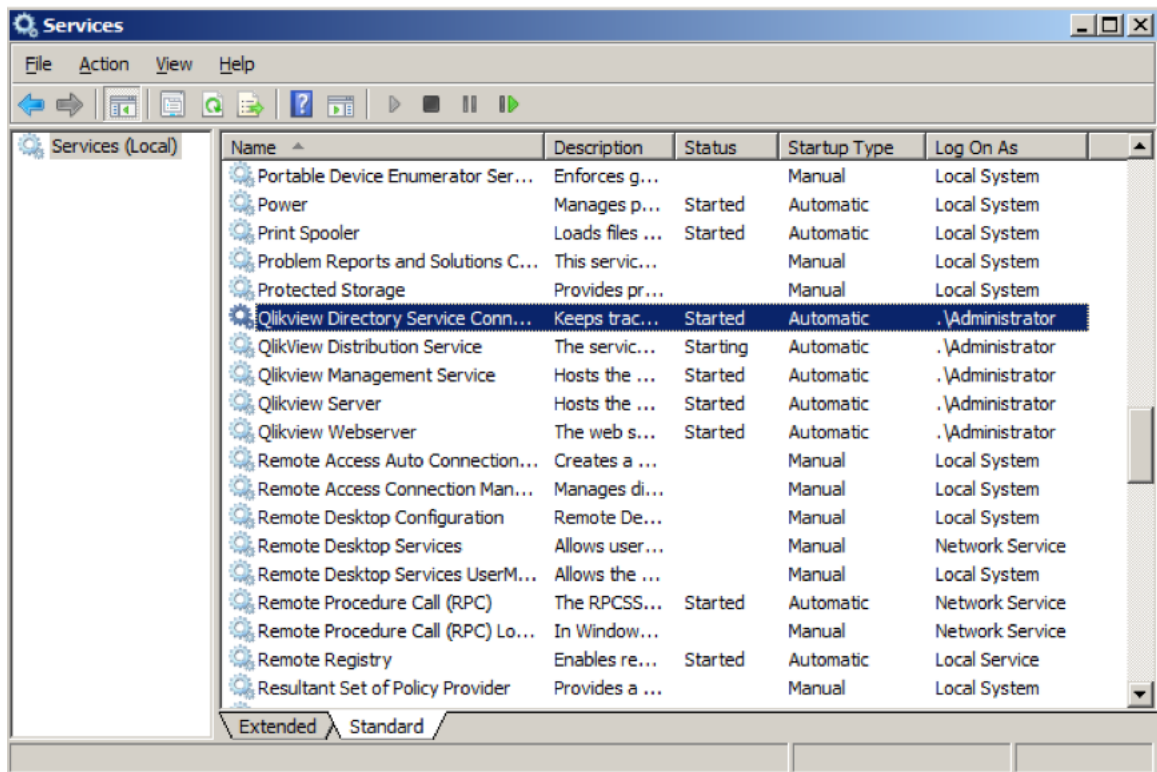
Configuration of the QlikView Server

After successfully installing the QlikView Server/Publisher, you must complete the following steps to activate it:

- Start the services
- Register the QlikView Server
- Configure the Document repository
- Configure Security and access control

Starting the service

Once the QlikView Server/Publisher has been installed as a Windows service, it can be started. If the QlikView Server is set for automatic startup, rebooting the operating system will start the QlikView Server service. To manually start the service, go to the Windows Computer Management, Services.



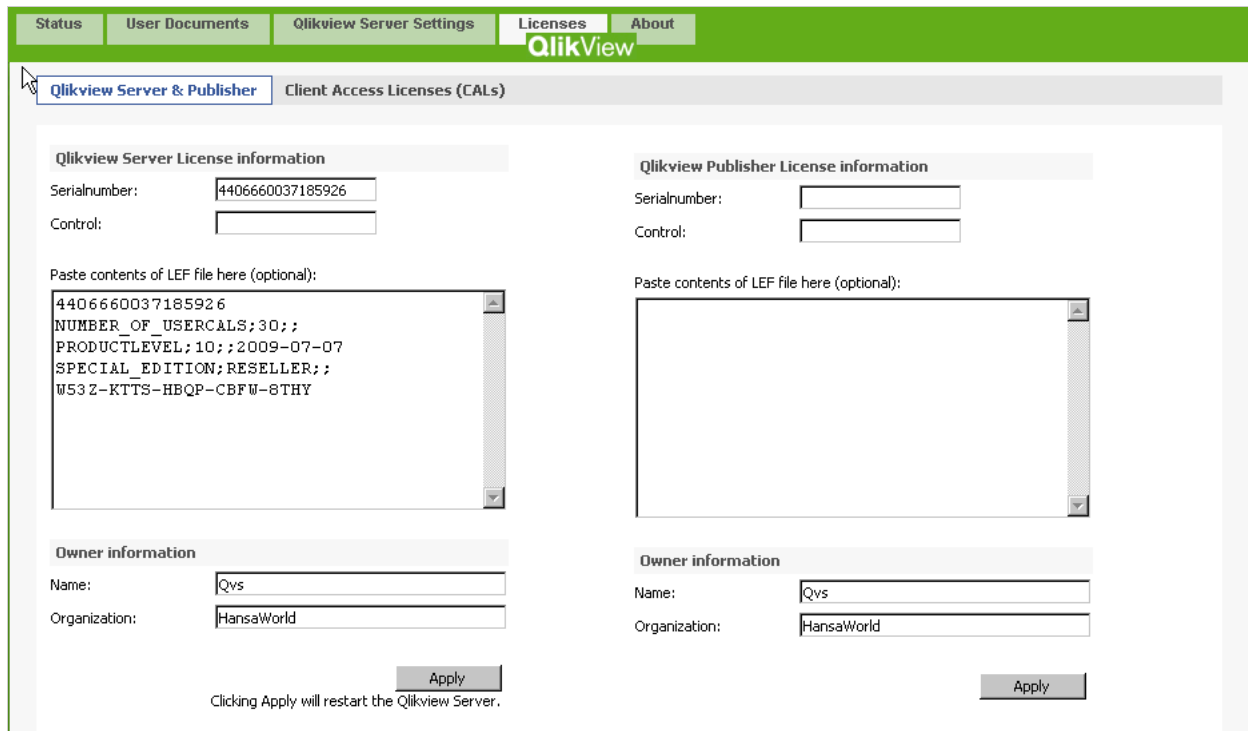
Registering QlikView Server instance

Registration authenticates your copy of the QlikView Server software and allows it to be run on your computer. In order to register, you must have a valid Serial Number and Control Number issued to you by your vendor. If you do not have both a Serial Number and a Control Number, please contact your local HansaWorld office.

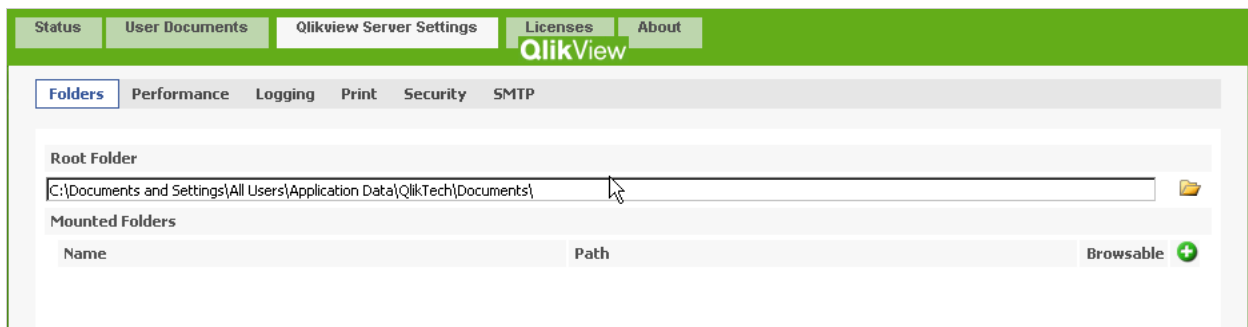
In the QlikView Management Console (License), enter the Serial Number and Control Number assigned to your copy of QlikView Server/Publisher. You should also enter your name and organisation in the fields provided.

Configuration of the Document Repository

By default the QlikView Server installation creates a Document Repository under **C:\Documents and Settings\All Users\Application Data\QlikTech\Documents**



To change the Default Repository open QlikView Management Console and select appropriate folder in Folders tab under QlikView Server Settings menu.



It is possible to add several other folders using this screen if needed by adding Mounted Folders.

Configuring QlikView Server Security and Access control

To configure the QlikView Server to use DMS (Document Metadata Service) security model, Change the setting in the QlikView Management Console Security tab under the QlikView Server Settings menu. DMS authentication method allows you to define access for each user for each document.

Setting up QlikView templates for web

To publish QlikView templates and make these accessible through a web browser or Enterprise's Inline browser, the QlikView Server must be installed and configured to use DMS Security authorisation and the QlikView Web Service must be started.

The QlikView Web Service is installed together with a QlikView Server and in v.10.0 is a part of the integrated QlikView solution. The QlikView Web Service is installed as a separate Windows service. By default it is running on port 80 therefore before starting it make sure no other services or applications are using this port. (e.g. Microsoft IIS, Skype)

To publish QlikView templates on the web:

1. Place the QlikView template file in main Document Repository or Mounted Folder

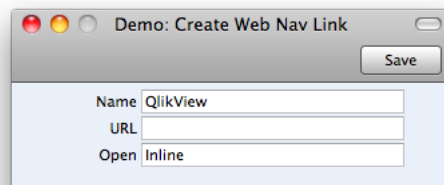
2. Open the **QlikView Management Console**, choose **User Documents** in the menu
3. Highlight the template that should be published
4. Specify available Access point **access methods** on the **Server Settings** tab on the right side
5. Add the users that are allowed to access the template on the **Authorisation** tab. Users names entered here will have access to the selected template.

Opening the SmartView template in the Enterprise's Inline browser

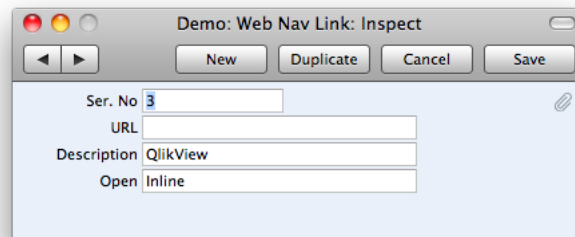
To be able to open the SmartView template in Enterprise's inline browser you need to create a new Web Link in Personal desktop using Enterprise by HansaWorld Cocoa client for Apple.

To do so click on Add icon on the top left corner of your **Personal desktop** and choose **Create Web Link** from the drop-down menu.

Specify the name of the Web Link and Save the link



Highlight the newly created Web Link on your personal desktop and choose **Edit Web Link** option from the drop-down menu of your Personal desktop. Specify the URL path to the SmartView template and the Description for your Web Link. Use the **Inline** option for opening type of the Web link.



Double clicking on the link in your Personal desktop will open the SmartView template in an Enterprise by HansaWorld Inline browser window.

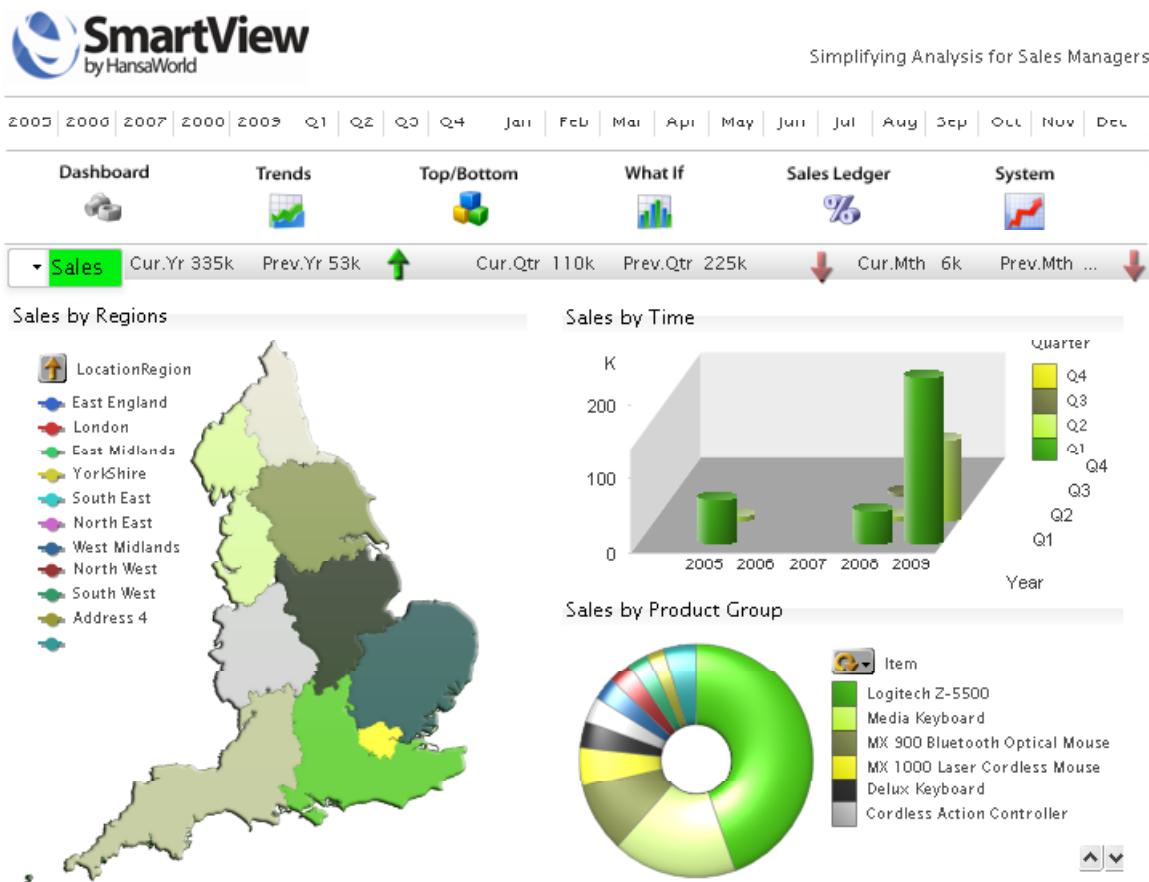
SMARTVIEW SALES TEMPLATE BY HANSAWORLD

Standard Sales template overview

The Dashboard displays graphs, key measures and trends, for the most important dimensions of your business - salesperson, item group, item and customer. Use selection criteria to switch between revenue, cost and quantities in the graphs, and make selections for any year, quarter or month.

Deployment of the Standard Sales template

To deploy the standard SmartView Sales template to the QlikView server copy the template “.qvt” file to the document repository and set the template availability for the web client as described in earlier in this document



The Date Range within Date selection field at the top of the SmartView template represents all available transaction dates loaded from Enterprise by HansaWorld database.

Date Selection

The Date selection works for whole template and once selected, will filter the data to be within the chosen range.

Clicking on any selection criteria is automatically stored for the session and all related data in the template is filtered using this criteria. To clear all selection filters click on **Home** link at the end of the page.

Trends page

The Trends worksheet on the SmartView Sales template Provides:

- Monthly sales breakdown comparing the current period with the prior period
- Seasonality chart
- Sales/costs/profit current period against prior period, and trend, for Salesperson, Item Group, Item and Customer

Top/Bottom page

This worksheet is particularly effective for Pareto analysis - when you need to see the top or bottom performing salespeople, item groups, items or customers. Use the slider to select the number of top or bottom performers to display.

What If.. page

This worksheet offers the ideal tool for creating top-level strategic budgets. You start from a table of actual results based on any date range of your choosing. These will be broken down by salesperson, item group, item or customer. You then use the sliders for the percentage change in sales, costs and quantities, to derive a forecast.

Sales Ledger page

Use the Sales Ledger worksheet to analyse the content of your open ledger balance. Graphs display the ledger breakdown by customer, age, specific invoice or invoice range or Sales man. The worksheet also displays days that invoices are overdue and average days overdue.

System Page

Here you can select from which company (or companies) the data will be displayed.

You also have to specify the IP address of the Enterprise server from where the data will be loaded.

Modification of data loading script

Currently the data reload is defined using a HAL customisation that outputs the data from the Enterprise database in XML format.

The data structure can be adjusted and modified by a Hal programmer based on specific needs or requirements.

A separate procedure is used in HAL to output each register and it generates a separate XML file for each register or block.

To add a new field to a register that already gets exported you only need to add new xml tags and field names for the register structure. See an example for register export below:

```
procedure QlikViewXMLDepartment(string compcode)
begin
record DepVc Depr;
while (LoopMain(Depr, 1, true)) begin
WebOutTagOpen("<Dep>");
WebOutTagOpen("<CompCode>");
WebOutStringFormat(compcode);
WebOutTagClose("</CompCode>");
WebOutTagOpen("<DepCode>");
WebOutStringFormat(QlikviewXmlString(Depr.Code));
WebOutTagClose("</DepCode>");
WebOutTagOpen("<DepName>");
if (nonblank(Depr.Description)) then begin
WebOutStringFormat(QlikviewXmlString(Depr.Description));
end;
WebOutTagClose("</DepName>");
WebOutTagClose("</Dep>");
WebOutNL;
end;
return;
end;
```

Modification of the Sales template script

The SmartView Sales template script is representing the QlikView data structure used to build graphical elements in the template.

SmartView template uses 4 main Key Performance Indicators in the Sales template:

- Sales
- Profit
- Cost
- Quantity

These Key Performance Indicators are defined and more KPI's can be added in the SmartView script if necessary using the **Inline** tab.

All of the charts can represent information split by 5 main criteria:

- Salesman
- Item Group
- Item
- Customer
- Location

Other data dimensions are used to represent data based on time or on region.

To add a new dimension to some of the structure element when it has been added to the QlikView HAL export structure you must add it to the script at the same place where it is added in the xml structure.

If *LocationCity* is a new field added to the XML output after *LocationName* tag, then in QlikView script it must be added as a new line after *LocationName* tag.

Location:

LOAD

 Autonumber (CompCode&LocationCode) as LocationKey, LocationName,

LocationCity,

 LocationCounty as LocationRegion

FROM [http://\$(IP)/WebQlikViewXml.hal?function=LocationList] (XmlSimple, Table is [LocationList/Location]);

APPENDIX

Terminology between different versions of english language

The language used in this material is British English. There can be slight differences between other versions of the English language, which can lead to confusions. This table should help to clear these up. Sorted alphabetically

British	USA	Canada	Australia + New Zealand	Singapore
Cheque	Check	Cheque	Cheque	Cheque
Colour/coloured	Color/colored	Colour/coloured	Colour/coloured	Colour/coloured
Credit Note(CN)	Credit Memo (CN)	Credit Memo (CM)	Credit Note (CN)	Credit Note
Dialogue	Dialog			
Instalment	Installment			
Jewellery	Jewelry	Jewellery	Jewellery	Jewellery
Licence (noun)	License	Licence	Licence	Licence
Mileage Claim	Miles	Way Lists	Mileage Claim	Mileage Claim
Miles	Miles	KM	KM	KM
Mobile	Cell	Mobile	Mobile	Mobile
Nominal Ledger (NL)	General Ledger (GL)	General Ledger (GL)	General Ledger (GL)	General Ledger (GL)
Post Code	ZIP Code	Post Code	Post Code	Post Code
Purchase Ledger	Payable (PL = AP)	Payable (PL = AP)	Purchase Ledger	Purchase Ledger
Sales Ledger	Receivable (SL=AR)	Receivable (SL=AR)	Sales Ledger	Sales Ledger
Salesman	Salesperson	Salesperson	Salesman	Salesperson
Stock	Inventory	Inventory	Stock	Inventory
Stocktake	Inventory Count	Inventory Count	Stocktake	Inventory Count
Stock Depreciation	Inventory Adjustment	Inventory Adjustment	Stock Depreciation	Inventory Adjustment
Supplier	Vendor	Vendor	Supplier	Vendor
VAT	Sales Tax or Tax	Tax (ideally GST/PST)	GST	GST/SST/HST